



The East of England Broadband Network - E2BN

Infrastructure sharing:

Problems and Solutions

Chris Kastel
Philip Pearce
Jon Hunt

E2BN is a Collection of Local Authorities

Who work together to:

- Provide best possible value for money
- A safe environment for children and young people



E2BN and the NEN



E2BN one of the 13 regional grids which form the UK wide National Education Network which:

- annually Saves over £100 million
- connects over 25,000 schools to broadband
- shares expertise
- provides a national voice
- reduces duplication of effort
- maximises the value of ever-dwindling public sector resources.

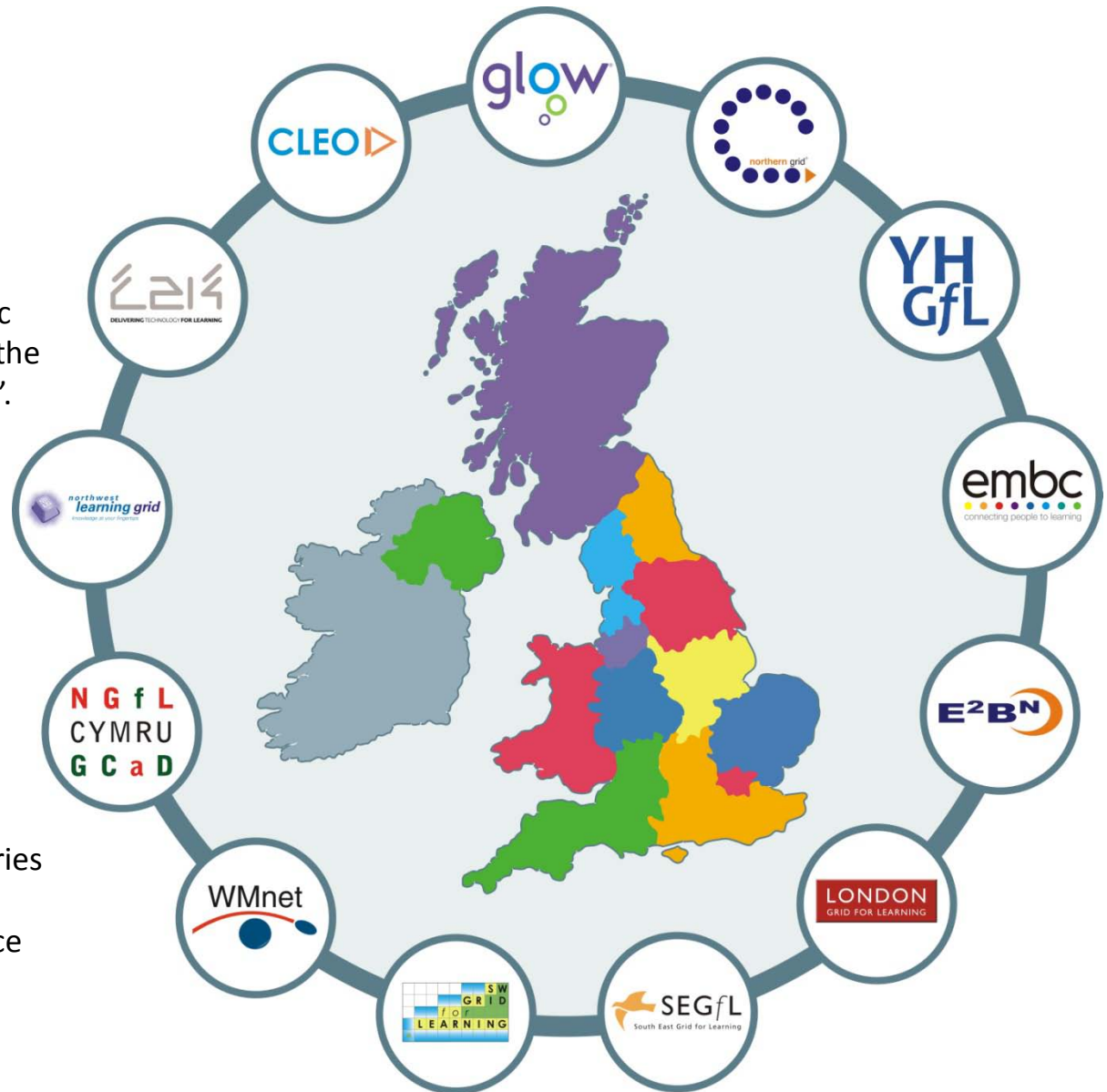
The NEN

Each RBC Unique - BUT
Collectively Strong

The Dept Business Innovation and Skills - “The NEN is a valuable Public Sector Resource that could deliver the ubiquitous Broadband entitlement”.

“The UK is lucky enough to benefit from the Regional Broadband Consortia (RBC) initiative in which RBC’s combine their purchasing expertise for the procurement of Internet services. Their collective purchasing power ensures safe, accessible services at best value prices. This model is held in high regard across Europe: in fact countries have approached UK RBCs for examples of best practice and advice on adoption.”

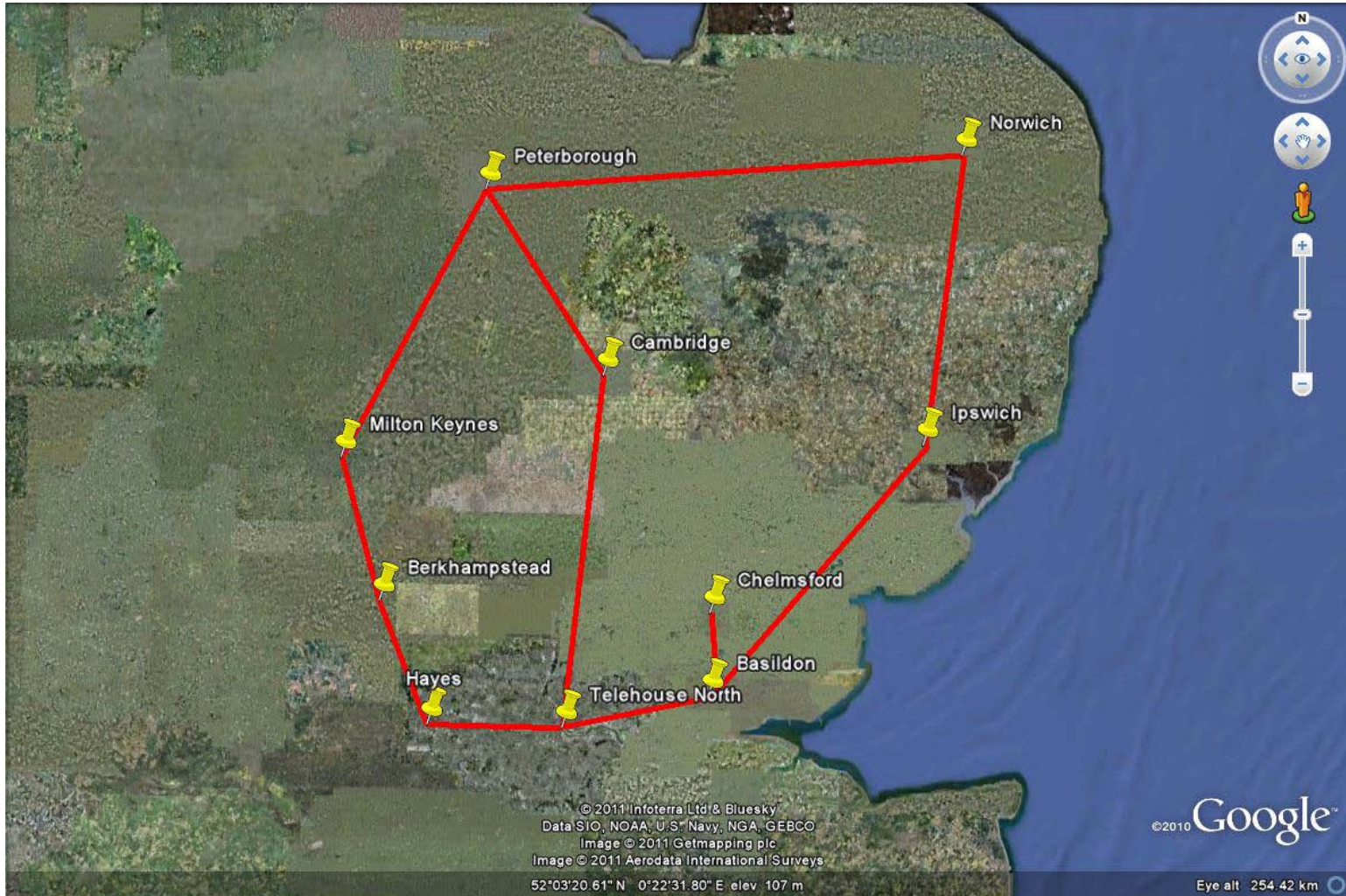
Phil Mullan, MD Easynet



The Region



- Joint Procurement with JANET(UK)
- Regional Infrastructure
 - Reduced Costs
 - Better Provision – Capacity & Reach
- Multiple Networks over a shared Infrastructure



The Perceived Problems

- Politics P & p
 - Personal Fiefdoms
 - Reluctance to change
- Trust
- Aggregation
- Industry
- Its easier to say NO –
- State Aid concerns

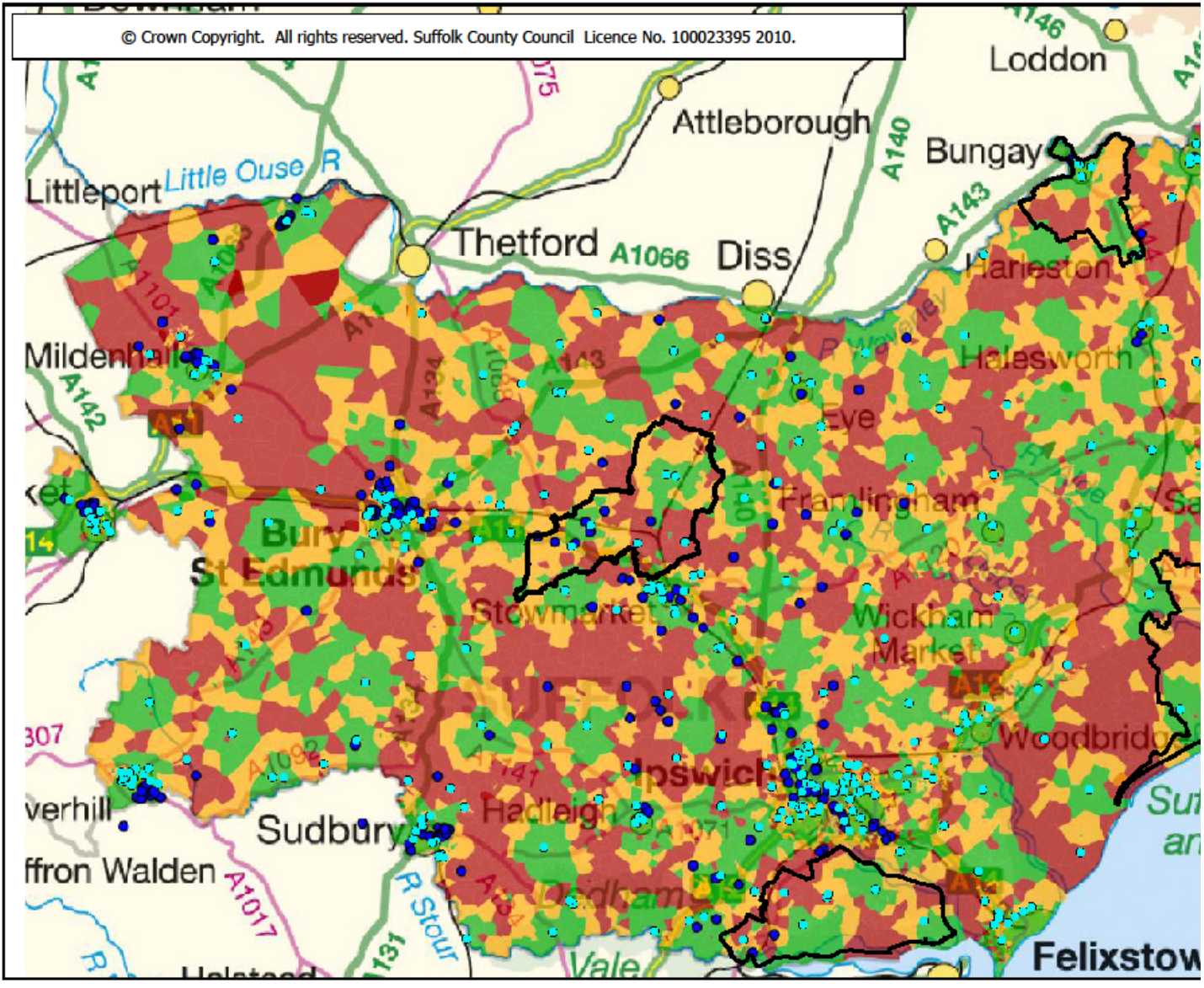
The Solutions

- Trust (look at the potential)
- Aggregate
 - Needs Government Support
 - Needs Local Support
- Use the School Network (look at the coverage)
 - Various options for SME/Citizen access

“The NEN is pivotal to the government delivering on its broadband commitment – Simon Towler BIS”

Suffolk, including pilot area boundaries: Broadband Speeds and School Locations

© Crown Copyright. All rights reserved. Suffolk County Council Licence No. 100023395 2010.



Chris Kastel
Philip Pearce
Jon Hunt

Chris@E2BN.org

Philip@E2BN.org

jon@broadbandpolicy.co.uk

www.E2BN.org