

# BROADBAND IN THE RURAL COMMUNITY

**THERE IS AN ALTERNATIVE!**

# Our Experience

- Successful installations
  - Community Projects (over 30 parishes)
  - Domestic (more than 500 households – across 30 parishes)
  - Commercial Provision (SOHO, SME, Bluechip)
- Understanding technical requirements
- Full project planning
  - Community project communications
  - Network planning (topographic & technical)
  - Service delivery
- Installation service
- Technical support

# Associations & Press

## Credibility

- Essex County Council
- EALC & RCCE
- CLA
- FSB
- BDUK & BIS
- House of Commons
- House of Lords
- NextGen 2010, Birmingham

## Recent Press

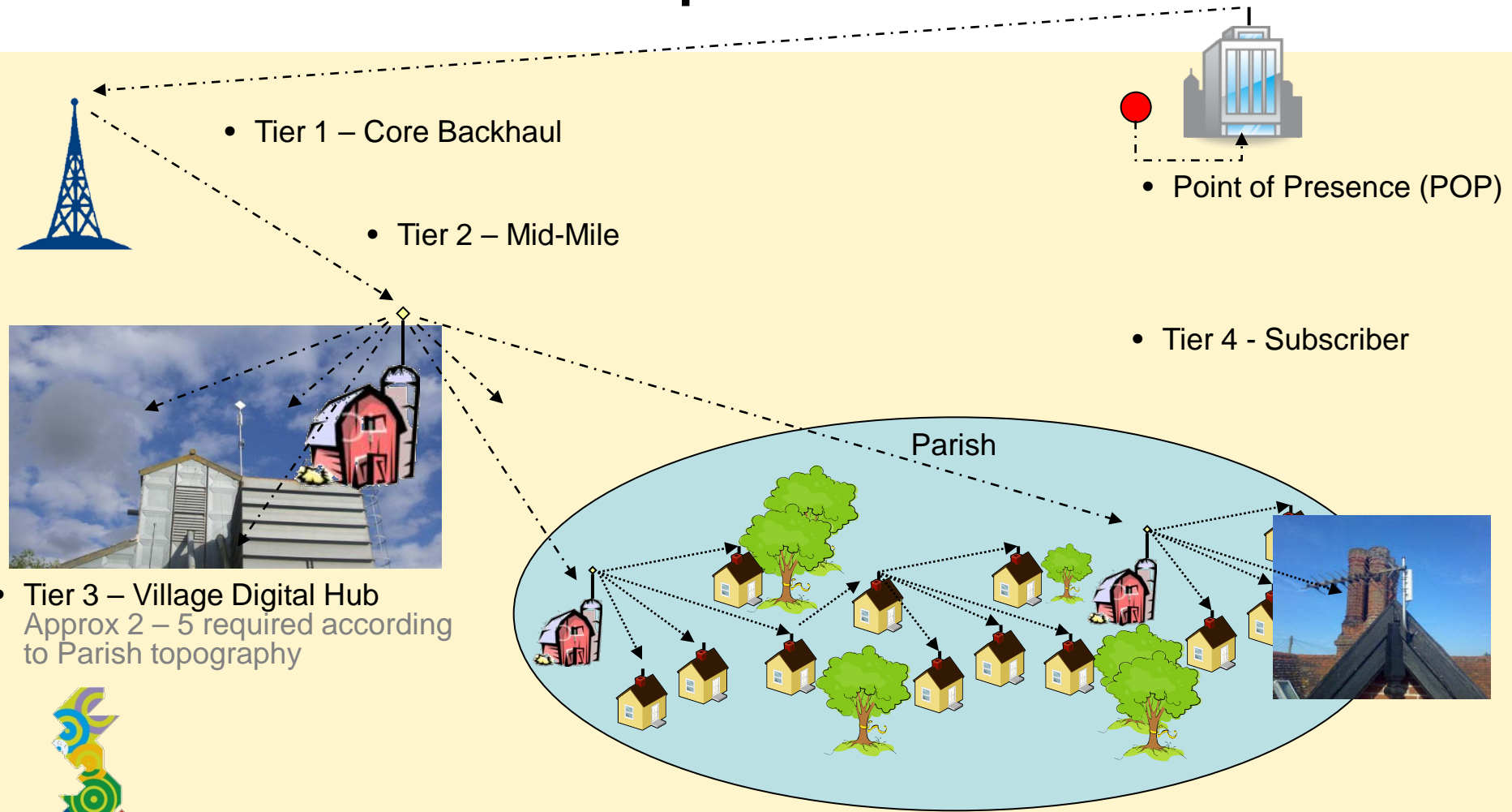
- BBC Look East
- Politics Show
- BBC Essex Radio
- Essex Chronicle
- Sussex Radio

# What it takes to provide Broadband?

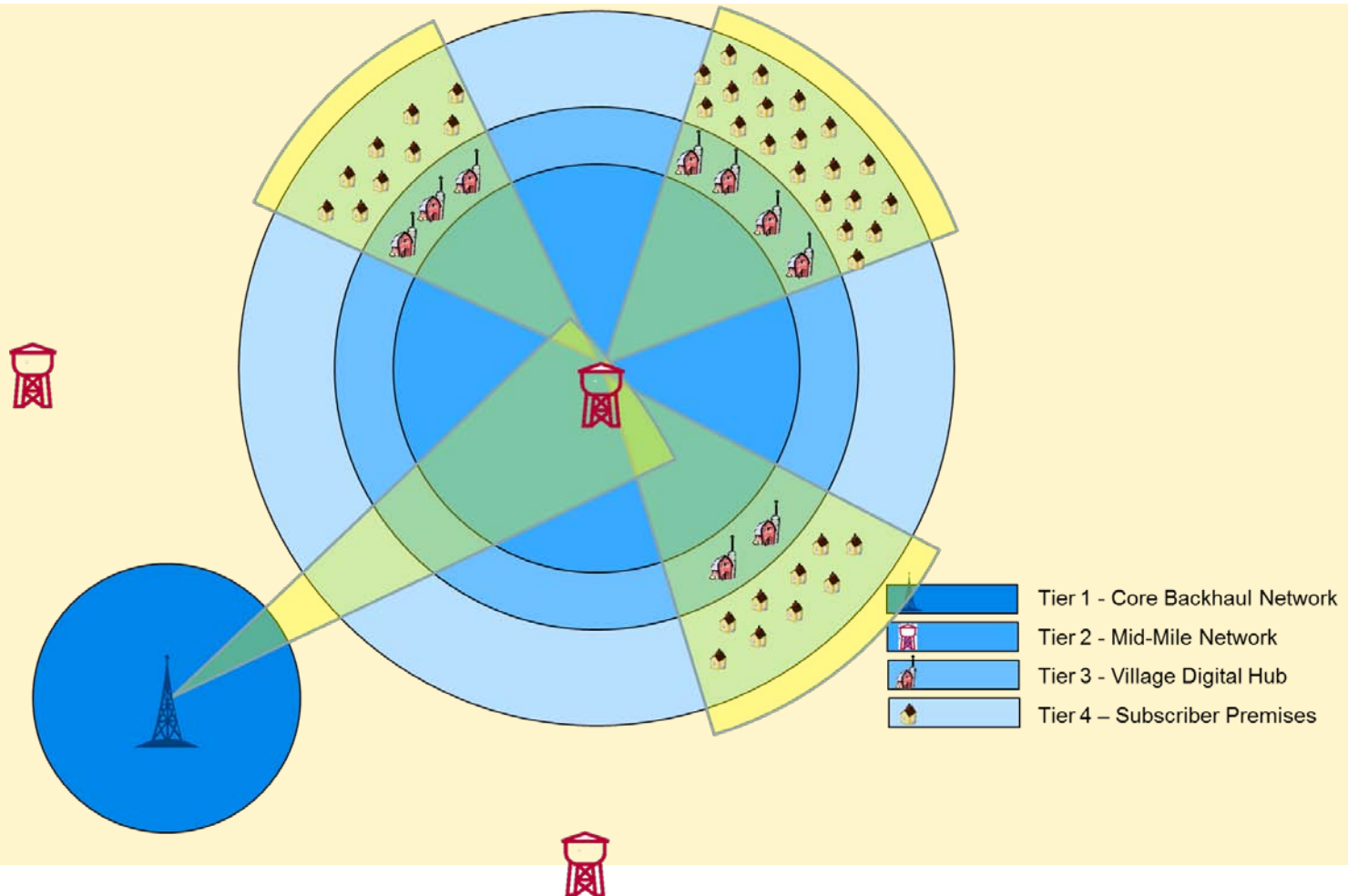
- Ability to plan and build a network
  - Last-mile distribution
  - Mid-mile provision
  - Access to high-speed Backhaul
- Niche market attraction

And what can be achieved...

# What it takes to provide Broadband?



# What it takes to provide Broadband?



# It's about time...

- **Time Scales (best case):**
  - Privately financed project - 2 months from enquiry to delivery
  - Community funded project - 5 months
    - 3 months to build the community interest,
    - 2 months for delivery of the service
  - Supplier funded project – 5 months
    - 3 months to build the community interest
    - 2 months for delivery of the service
  - Grant funded - 6-18 months+
    - 3 months to build the community interest
    - 2 months for delivery of the service
    - + grant timetable (application window + weeks, or months to consider)

# The Time is NOW!

## So let' get started!

Thank you

Lloyd Felton  
lloyd@countybroadband.co.uk  
0845 400 5000